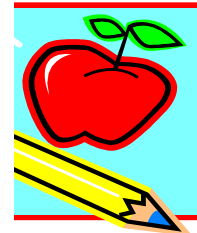




Canossa Convent Primary School
Newsbites
 Connecting School to Homes



Also available on the CCPS website <http://www.canossaconventpri.moe.edu.sg>

Volume 1, Issue 5 2015

~ September 2015 ~						
Sun	Mon	Tue	Wed	Thu	Fri	Sat
Term 3 Week 10		1 School Health Visit (TBC) P6 Digital Music (6 CH & 6 FA) (During Art lesson) 1410-1600 Performing Arts CCA Artitude	2 School Health Visit (TBC) 0810-1310 Books To Go (Tentative) P6 Digital Music (6 HU) (During Art lesson) 1415-1700 Optional enrichment P3 Swimming	3 0740-0840 PSLE Mass 0740-0910 Teachers' Day Celebration	4 Teachers' Day Holiday	5
6 September Holiday	7	8	9 0900-1200 CCA (optional)	10 0800-1230 P6 Enrichment *Details to be furnish at a later date 0900-1200 CCA (optional) Starlight Camp (Selected students) * Details to be furnished to relevant students at a later date	11 General Election Polling Day (School is closed)	12
13 Term 4 Week 1	14 Fdn Math/ Enrichment/ Remedial (P3, P4 & P6) P5 SA2 EL& MT Oral (After curriculum)	15 0810-1310 Books To Go P5 SA2 EL& MT Oral (After curriculum) 1410-1600 Performing Arts CCA Artitude	16 P4 SS/HE Online Test 1415-1700 Optional enrichment P3 Swimming 1410-1600 CCPS rehearsal (for selected pupils)	17 P5 SS/HE Online Test	18 PSLE EL & MT LC (P1 to P5 pupils do not come to school)	19

~ September 2015 ~

Sun	Mon	Tue	Wed	Thu	Fri	Sat
20 Term 4 Week 2	21 P1/2/3 SS/HE Online Test Fdn Math/ Enrichment/ Remedial (P1, P2, P5 & P6) P4 SA2 EL & MT Oral (After curriculum) 1530-1730 CCPS Superstar rehearsal (for selected pupils)	22 P1/2/3 SS/HE Online Test P3 SA2 EL & MT Oral (After curriculum) 1410-1600 Performing Arts CCA Artitude	23	24 Hari Raya Haji	25 1410-1600 CCA 17 1410-1600 P6 Enrichment (EL, MA, SC)	26
27 Term 4 Week 3	28 P2 SA2 EL & MT Oral (During curriculum) 1315-1530 (i) Enrichment for all P5 & P6 students (ii) Remedial for selected P1 to P4 students (iii) Fdn Math *(P6 Fdn Math Students) * Fdn Math lessons will start at 1240	29 1410-1600 Performing Arts CCA Artitude 1410-1600 CCPS Superstar rehearsal (for selected pupils)	30 P2 SA2 EL & MT Oral (During curriculum)			

~ October 2015 ~

Sun	Mon	Tue	Wed	Thu	Fri	Sat
Term 4 Week 3				1 PSLE EL Paper 1 & 2 0840-1240 P2 LJ to Singapore Art Museum 1410-1530 (i) HMT (P5 HMT students) (ii) Enrichment (All P5 MT students) iii) Remedial for selected P3 & P4 MT students	2 PSLE MA Paper 0840-1240 P1 LJ to Asian Civilisation Museum (1 HUM & 1 FA)	3

~ October 2015 ~

Sun	Mon	Tue	Wed	Thu	Fri	Sat
4 Term 4 Week 4	5 PSLE MT Paper 1 & 2 0840-1240 P1 LJ to Asian Civilisation Museum (1 CH & 1 JO) 1315-1530 (i) Enrichment for all P5 students (ii) Remedial for selected P1 to P4 students	6 PSLE SC Paper 1410-1600 Performing Arts CCA Artitude	7 PSLE HMT Paper 1 & 2	8 Children's Day Celebration and CCPS Superstar 1410-1530 (i) HMT (P5 HMT students) (ii) Enrichment (All P5 MT students) iii) Remedial for selected P3 MT students	9 Children's Day Holiday	10
11 Term 4 Week 5	12 SA2 EL Paper 1 & LC 0740-0940 P6 Guitar (P6 CH) P6 Inline Skating (P6 FA & HU) 1040-1140 P6 Sexuality Programme 1140-1340 P6 Guitar (6 FA & 6 HU) P6 Inline Skating (6CH) 1315-1530 (i) Enrichment for all P5 students (ii) Remedial for selected P1 to P4 students	13 SA2 MT Paper 1 & LC 0740-0940 P6 Guitar (P6 CH) P6 Inline Skating (P6 FA & HU) 1040-1140 P6 Sexuality Programme 1140-1340 P6 Guitar (6 FA & 6 HU) P6 Inline Skating (6CH)	14 0740-0940 P6 Guitar (P6 CH) P6 Inline Skating (P6 FA & HU) 1040-1140 P6 Sexuality Programme 1140-1340 P6 Guitar (6 FA & 6 HU) P6 Inline Skating (6CH)	15 SA2 HMT Paper 1 (After curriculum) 0740-1010 P6 Games Day 1140-1340 P6 Guitar (6 FA & 6 HU)	16 0740-0940 P6 Guitar (P6 CH) 1210-1340 P6 Guitar Level Performance	17
18 Term 4 Week 6	19 PSLE Marking All students <u>need not</u> report to school. 0830 - 1530 Study Camp for selected pupils * details will be given at a later date	20 PSLE Marking All students <u>need</u> not report to school. 0830 - 1530 Study Camp for selected pupils * details will be given at a later date	21 PSLE Marking All students <u>need</u> not report to school. 0830 - 1530 Study Camp for selected pupils * details will be given at a later date	22 PSLE Marking All students <u>need not</u> report to school. 0830 - 1530 Study Camp for selected pupils * details will be given at a later date	23 0840-1240 P6 LJ to The Peranakan Museum (6 CH) 1410-1600 CCA	24
25 Term 4 Week 7	26 No Fdn Math/ Enrichment/ Remedial (P1-P6)	27 0840-1240 P6 LJ to The Peranakan Museum (6 FA)	28 SA2 EL Paper 2	29 SA2 MA Paper P6 Mission	30 SA2 MT Paper 2 P6 Mission	31

ANNOUNCEMENTS

Children's Day Celebration

The theme for this year's Children's Day Celebration is '**The Rainbow Connection!**' Pupils from the various levels will come to school dressed in the colour designated to the level, thus representing a colourful and diverse community united as one CCPS!

Below is the list of colours that will be represented by every level:

- P1 – Red**
- P2 - Orange**
- P3 - Yellow**
- P4 - Green**
- P5 - Blue**
- P6 - Violet**

This year's Children's Day celebration will be held on **8 Oct 2015**. As part of the celebration, there will be a Best Dressed Contest and CCPS Superstar Competition. The CCPS Superstar Competition serves to provide a platform for outstanding pupils to showcase their talents to the rest of the school.

On 8th Oct, all pupils are encouraged to come dressed in the colour assigned to their level to signify their unity and be part of the 'Rainbow Connection'. Please note that all pupils must still wear their nametags and school shoes to school.

School Value of Term 4: Cheerfulness

For Term 4, the school value focussed on is *Cheerfulness*. This is central to our vision of developing our pupils to become Passionate Learners. We hope our pupils learn to persevere in the face of challenges and see possibilities and the best in people and every situation. We will tap on platforms such as assembly talks, values education lessons, Form Teacher Guidance Period lessons, and the daily teachable moments. We strongly believe that parents play an important part in inculcating values. Hence, we encourage all parents to talk to your child about the value of cheerfulness and how they can show it. Do catch them in action and share with our teachers how your child has shown cheerfulness at home or outside school.

P2-P5 SA2 Examinations

Please note that the oral examinations are conducted after curriculum time, except for P2 pupils.

14 Sept (Mon)	P5 EL/MT Oral Day 1
15 Sept (Tue)	P5 EL/MT Oral Day 2
16 Sept (Wed)	P4 SS/HE Online Test
17 Sept (Thur)	P5 SS/HE Online Test
21 Sept (Mon)	P4 EL & MT Oral P3 SS/HE Online Test
22 Sept (Tues)	P3 EL & MT Oral P1 SS/HE Online Test
12 Oct (Mon)	P2 to P5 EL Paper 1 & LC
13 Oct (Tues)	P2 to P5 MT Paper 1 & LC
15 Oct (Thur)	P2 to P5 HMT Paper 1
28 Oct (Wed)	P2 to P5 EL Paper 2
29 Oct (Thur)	P2 to P5 MA Paper
30 Oct (Fri)	P2 to P5 MT Paper 2
2 Nov (Mon)	P2 to P5 SC Paper

Absence from School Examinations

Parents and Guardians, please be reminded that should your child/ward be absent from an examination without a valid reason, no marks would be given to her. If she is unwell on the day of the examination, a medical certificate must be presented to the school.

P6 Primary Leaving School Examination (PSLE)

Please note that the PSLE is conducted on the following dates:

18 Sep (Fri)	PSLE LC
1 Oct (Thu)	PSLE EL Paper 1 & 2
2 Oct (Fri)	PSLE Math Paper
5 Oct (Mon)	PSLE MT Paper 1 & 2
6 Oct (Tue)	PSLE Science Paper
7 Oct (Wed)	PSLE HMT Paper 1 & 2

P6 pupils are to refer to the "2015 PSLE Instructions to Candidates" booklet given to them by their Form Teachers in Term 2 for further details.

Dear parents, wondering where to bring your child? Look out for this column where we will be featuring free music events performed by various performing groups. Do bring your child down if you are free and enjoy the performances!

Free Music Events for September 2015

6 Sep 2015 (Sun)

PianoBotanica - A Night of Brazilian Music with Duo Bastos & Borges
Shaw Foundation Symphony Stage
Singapore Botanic Gardens
6 pm

12 Sep 2015 (Sat)

Singapore Youth Chinese Orchestra
Shaw Foundation Symphony Stage
Singapore Botanic Gardens
6 pm – 7 pm

13 Sep 2015 (Sun)

NAC-ExxonMobil Concert in the Park
Shaw Foundation Symphony Stage
Singapore Botanic Gardens
4.30 pm – 6.30 pm

13 Sep 2015 (Sun)

Once Upon a Moon
Braddell Heights Chinese Orchestra
Esplanade Concert Hall
3 pm – 4 pm

26 Sep 2015 (Sat)

SG50 Concert Series in the Park
Bedok Reservoir Park
6 pm – 10 pm

Free Music Events for October 2015

3 Oct 2015 (Sat)

International A Capella Festival Opening Show
Shaw Foundation Symphony Stage
Singapore Botanic Gardens
6 pm – 8 pm

4 Oct 2015 (Sun)

Tropic Green
Shaw Foundation Symphony Stage
Singapore Botanic Gardens
5.30 pm – 7 pm

31 Oct 2015 (Sat)

SG50 Concert Series in the Park
Jurong Central Park
6 pm – 10 pm

Good Read

Do look out for this column where we feature inspiring articles!

Let's Talk About...Puberty

17 Aug 2015
Link: <https://schoolbag.sg/story/let's-talk-about-puberty#.VdPHsaSqqko>

The Importance of Being Punctual

By Hazelman Norhafis, Changkat Changi Secondary School
Recipient of Outstanding Youth in Education Award 2015
3 Aug 2015
Link: <https://schoolbag.sg/story/the-importance-of-being-punctual#.VdPIHKSqqko>